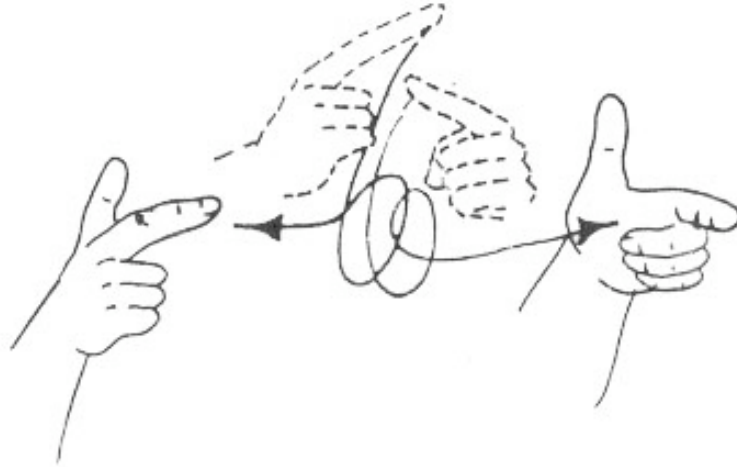


**L.I.S.T.E.N.**

**Language Interpreter and Sign Translator for  
Educational Needs**



**Acceptance Test Plan**

**Authors:**

**Jennifer Crowell**

**Kulvir Singh**

**Abraham Evangelista**

**Susan Philip**

**Sugnesh Patel**

## Introduction

This document defines the test cases that will determine the success or failure of the LISTEN system. These tests will only have two possible outcomes: pass or fail. In order for the LISTEN system to be successful, the system must pass all of the test cases contained in this document. Each test case follows the following format: the state of the system at the start of the test case, the action taken, and the expected result of the action taken.

## Test Case Definitions

### General Tests

<b>Requirements Traceability</b>	<b>Test Parameters</b>
3.2.1 Selection Modes	Initial State: User is at the windows desktop.  Action: User clicks the start menu, and clicks on the LISTEN icon.  End State: LISTEN starts, displays the splash screen, and waits at the main menu.
3.2.1 Selection Modes	Initial State: LISTEN is at the Main Menu, waiting for user input.  Action: User moves mouse over classroom mode, and puts focus on that button.  End State: Listen displays the graphic and description for classroom mode.
3.2.1 Selection Modes	Initial State: LISTEN is at the Main Menu, waiting for user input.  Action: User moves mouse over presentation mode, and puts focus on that button.  End State: Listen displays the graphic and description for presentation mode.

3.2.1 Selection Modes	<p>Initial State: LISTEN is at the Main Menu, waiting for user input.</p> <p>Action: User moves mouse over tutor mode, and puts focus on that button.</p> <p>End State: Listen displays the graphic and description for tutor mode.</p>
3.2.1 Selection Modes	<p>Initial State: LISTEN is at the Main Menu, waiting for user input.</p> <p>Action: User moves mouse over playback mode, and puts focus on that button.</p> <p>End State: Listen displays the playback and description for classroom mode.</p>
3.2 Graphical User Interface	<p>Initial State: LISTEN is at the Main Menu, waiting for user input.</p> <p>Action: User clicks on the minimize button.</p> <p>End State: LISTEN shrinks to the bar.</p>
3.2 Graphical User Interface	<p>Initial State: LISTEN is at the Main Menu, waiting for user input.</p> <p>Action: User clicks on the exit button</p> <p>End State: LISTEN terminates.</p>
3.2 Graphical User Interface	<p>Initial State: LISTEN is at the Main Menu, waiting for user input.</p> <p>Action: User clicks on the [x] button.</p> <p>End State: LISTEN terminates.</p>
3.2.1.1 Classroom Mode	<p>Initial State: LISTEN is at the Main Menu, waiting for user input.</p> <p>Action: User clicks on the classroom button.</p> <p>End State: Main Menu disappears. Classroom mode starts.</p>
3.2.1.3 Presentation Mode	<p>Initial State: Listen is at the Main Menu, waiting for user input.</p> <p>Action: User clicks on the presentation button.</p> <p>End State: Main Menu disappears. Presentation mode starts.</p>

3.2.1.2 Tutor Mode	<p>Initial State: Listen is at the Main Menu, waiting for user input.</p> <p>Action: User clicks on the tutor button.</p> <p>End State: Main Menu disappears. Tutor mode starts.</p>
3.2.1.2 Playback Mode	<p>Initial State: Listen is at the Main Menu, waiting for user input.</p> <p>Action: User clicks on the playback button.</p> <p>End State: Main Menu disappears. Playback mode starts.</p>

### Graphical Window Tests

Requirements Traceability	Test Parameters
3.3.1 Tutor Window	<p>Initial State: Tutor Window is open on screen.</p> <p>Action: Check that Tutor Window contains the Graphic Display Window, in addition to a list of all the English words in the current dictionary by category.</p> <p>End State: Graphic Display Window and Word List should be displayed.</p>
3.3.2 Presentation Display	<p>Initial State: Presentation Display Window is open.</p> <p>Action: Check that Graphic Output is displayed</p> <p>End State: Graphic Output should be displayed in the Presentation Display window.</p>
3.4.2 Lower Window Pane	<p>Initial State: The Lower Window Pane is active on the screen.</p> <p>Action: Press the Hide button.</p> <p>End State: Lower Window Pane is minimized.</p>
3.4.3 Control Bar	<p>Initial State: Display Window is paused.</p> <p>Action: Press Play button.</p> <p>End State: Play button text changes to Pause. The graphic output is playing.</p>

3.4.3 Control Bar	<p>Initial State: Display window is playing.</p> <p>Action: Press Pause button.</p> <p>End State: Pause button text changes to Play. The graphic output is paused.</p>
3.4.3 Control Bar	<p>Initial State: Display Window is playing.</p> <p>Action: Press Rewind button n times. Here n = 1, 2, 3 ...</p> <p>End State: Graphic output is resumed, replaying the n previous signs.</p>
3.4.3 Control Bar	<p>Initial State: Graphic Output is playing in Playback Mode only.</p> <p>Action: Press Forward button n times. Here n = 1, 2, 3 ...</p> <p>End State: Graphic output is resumed n signs forward from the time the button is pressed.</p>
3.4.3 Control Bar	<p>Initial State: The Graphic Window is playing or currently paused.</p> <p>Action: Press the stop button.</p> <p>End State: Graphic output is stopped. The stop button is deactivated.</p>
3.4.3 Control Bar	<p>Initial State: The Graphic Window is active and currently playing.</p> <p>Action: Drag the Speed Slider to the left.</p> <p>End State: Graphic output slows down.</p>
3.4.4 Window Requirements	<p>Initial State: Graphic Display Window is displayed.</p> <p>Action: Try to resize the Graphic Display Window.</p> <p>End State: Graphic Display Window is not resized.</p>
3.5.2 Vertical Window Pane	<p>Initial State: The Vertical Window Pane is displayed.</p> <p>Action: Verify that the Options Combo Box and Expandable Word List are Displayed.</p> <p>End State: Both of these features should be available on the pane.</p>

3.5.3 Options Combo Box	<p>Initial State: The Vertical Window Pane is displayed.</p> <p>Action: Click on the Options Combo Box.</p> <p>End State: Choices for Category, Signed English Dictionary, and Alphabetic &amp; Numeric Characters are displayed.</p>
3.5.4.1 Expandable Words List, Category	<p>Initial State: Options Combo Box is active on the Vertical Window Pane.</p> <p>Action: Click on the Category option.</p> <p>End State: A list of the available categories is displayed.</p>
3.5.4.2 Expandable Words List, Signed English Dictionary	<p>Initial State: Options Combo Box is active on the Vertical Window Pane.</p> <p>Action: Click on the Signed English Dictionary option.</p> <p>End State: A list of the available words is displayed in alphabetical order.</p>
3.5.4.3 Expandable Words List, Alphabetic & Numeric Characters	<p>Initial State: Options Combo Box is active on the Vertical Window Pane.</p> <p>Action: Click on the Alphabetic &amp; Numeric Characters option.</p> <p>End State: A list of the available Characters is displayed.</p>

### Error Handling Tests

<b>Requirements Traceability</b>	<b>Test Parameters</b>
3.7.1.3 Failure Mode	<p>Initial State: LISTEN Software is running.</p> <p>Action: Quit Dragon Naturally Speaking Software.</p> <p>End State: Dragon Naturally Speaking Software is restarted.</p>
3.2.2 Failure Mode	<p>Initial State: LISTEN Software is translating in any mode.</p> <p>Action: A non-parsable string enters the input stream.</p> <p>End State: LISTEN displays a symbol for an unrecognized character and moves on to the next token.</p>